



# EAGLE MOUNTAIN HS



This photo is of the eastern view of the campus showing the pond/courtyard area.





**Backside view of the main academic building. Metal studs, rough-in electrical, and duct work are progressing in the lower and main levels.**





**This photo shows the southern view of the main entrance.**





CMU block is in progress on the cafeteria.

The photo on the right is of the front main hallway extending to the skybridge.







Progress continues on the storm shelter and gymnasium areas.







**Aerial photo is a southern view of the stadium, tennis courts, and baseball/softball areas.**



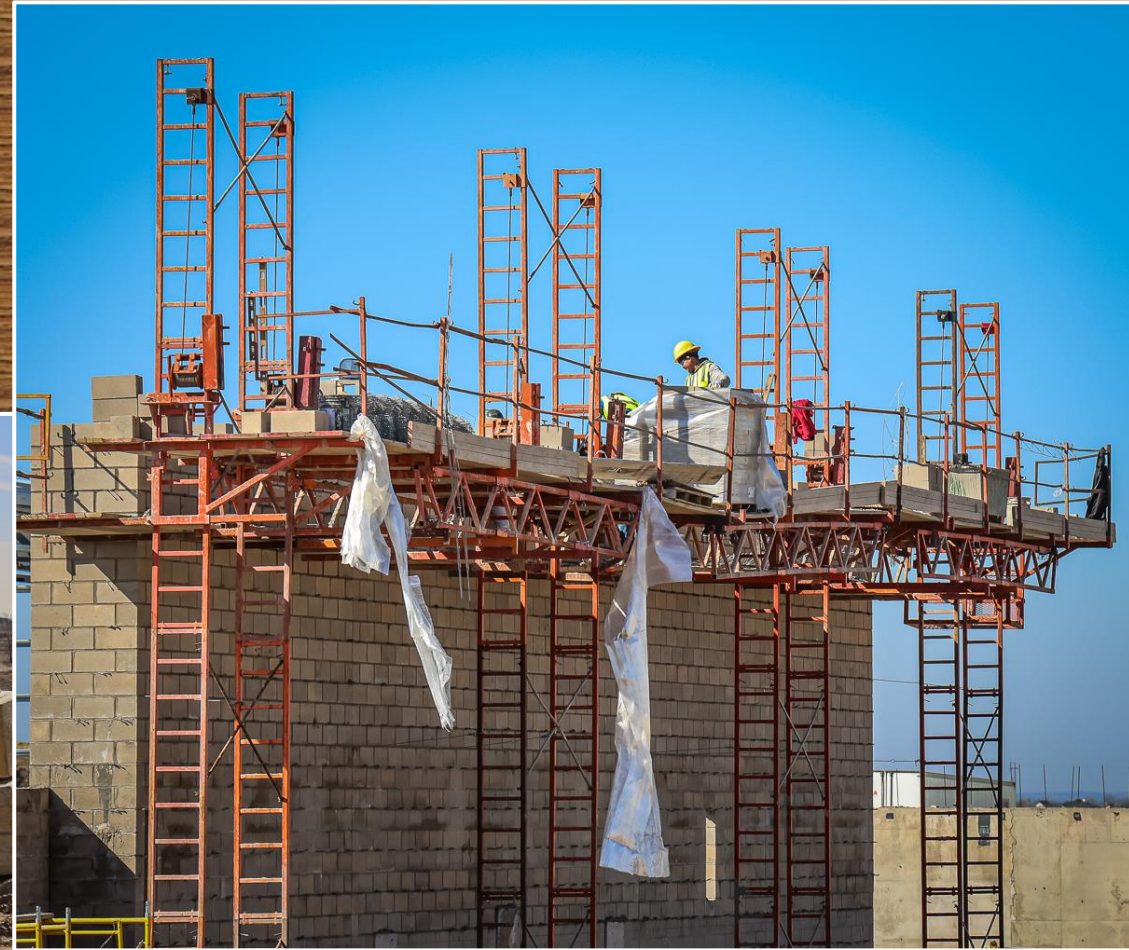


Multi-purpose building is in progress.





Retaining walls to the eastern entrance to the visitor parking are near completion.



CMU block is progressing on the field house.



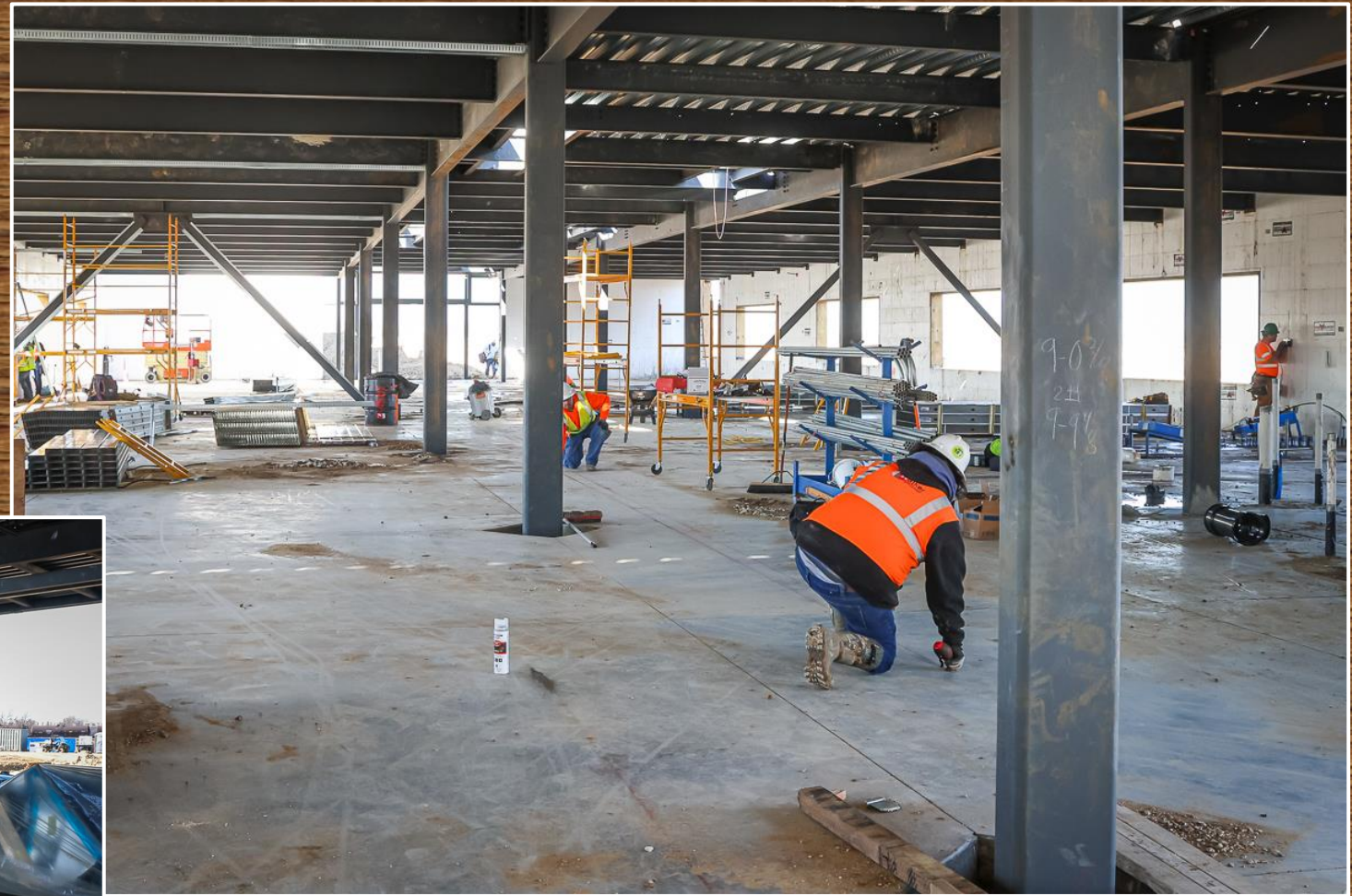


# ELIZABETH LOPEZ HATLEY ES



The photo is a western overview of the campus.





Work continues on the main hallway and library. Installation of metal studs and HVAC duct work is in progress.





The photo on the left is of the elevator pit in the kindergarten/first grade wing. Work continues on the second floor decking.

Both bottom photos are of the cafeteria focusing on the ceiling fur-downs and stage construction.

